

A photograph of a male teacher with glasses, wearing a blue button-down shirt and grey trousers, standing at the front of a classroom. He has his hands clasped and is looking towards the students. In the foreground, two young boys are seated at white desks, facing away from the camera. They are using laptops. The boy on the left is wearing a green shirt and glasses, while the boy on the right is wearing a black shirt. The classroom has white walls, a whiteboard, and a large screen displaying a presentation. The floor is light-colored wood.

IMPLEMENTING THE NATIONAL EDUCATION POLICY

A Handbook for Teachers in Meghalaya



Copyright:

Copyright © [2024] [NagaEd]. All rights reserved.

The content, materials, and resources provided in this National Education Policy (NEP) Handbook, including but not limited to text, images, diagrams, and graphics, are protected by copyright law. This handbook or any part thereof may not be reproduced, distributed, or transmitted in any form or by any means, electronic or mechanical, including photocopying, recording, or any information storage and retrieval system, without the prior written permission of NagaEd.

For inquiries regarding the use, licensing, or distribution of this NEP Handbook, please contact hello@nagaed.com.

Unauthorised use or reproduction of this NEP Handbook or its contents may result in legal action in accordance with applicable copyright laws.

Disclaimer:

The information provided in this National Education Policy Handbook is for general informational purposes only. While we strive to ensure accuracy, NagaEd does not guarantee the completeness or reliability of the information.

This handbook does not constitute professional or legal advice. Any reliance on the information herein is at your own risk. For specific advice, consult relevant experts or authorities.

NagaEd is not liable for any damages resulting from the use of this Handbook. External links or resources mentioned do not imply endorsement.

By using this NEP handbook, you agree to these terms. Content may be updated without notice.

For inquiries, contact hello@nagaed.com.

Dear Teachers,

We are delighted to present this handbook on implementing the National Education Policy (NEP) 2020 in your school. The NEP 2020 is a landmark policy that aims to transform India's education system to meet the needs of the 21st century. As educators, it is our responsibility to ensure that our classrooms are aligned with the NEP 2020 and provide the best possible education to our students.

At NagaEd, we are committed to supporting teachers in Meghalaya to implement the National Education Policy 2020. We believe that every child deserves access to quality education, and we are passionate about empowering teachers with the tools and resources they need to achieve this goal. Our products and services are designed to support teachers in aligning their curriculum, improving their capacity, introducing technology in the classroom, as well as promoting skill-based education and experiential learning.

This handbook serves as a roadmap for implementing the NEP 2020 and explains how NagaEd can support you. We will cover essential topics such as assessing the current state of your classroom, aligning the curriculum with the NEP 2020, introducing technology in the classroom, implementing continuous assessment, focusing on skill-based education, encouraging experiential learning, involving parents and the community, and monitoring and evaluating progress.

We are thrilled to support your journey towards implementing the NEP 2020 in your school.

Sincerely,



Kevisato Sanyu
Founder, NagaEd

About NagaEd

NagaEd is a leading digital education company that offers a wide range of products and services to assist teachers in Meghalaya in implementing the National Education Policy 2020. Our objective is to equip schools with cutting-edge tools and technologies to aid students in succeeding in the 21st century.

Our DIGITAL CLASS: FREE FOR TEACHERS is designed to help teachers align their classrooms with the NEP 2020 framework and ensure students acquire the skills necessary to thrive in the modern world. We offer high school Maths & Science courses aligned with the state curriculum.

Our professional development programmes are specially crafted for teachers to stay up-to-date with the latest pedagogical approaches and best practices for integrating technology into the classroom.

We provide digital learning resources and assessment tools that facilitate a more interactive and dynamic approach to learning, while also enabling student progress tracking and personalised feedback. We offer over 1000+ explanation videos, interactive games, and simulations to help your students better understand and comprehend textbook material.

At NagaEd, we believe technology is a powerful tool that can enhance education outcomes in Meghalaya, and we are dedicated to working with teachers throughout the state to ensure that every student has access to the best possible education.



www.nagaed.com



+91 87877 48698



hello@nagaed.com



[instagram.com/nagaedofficial](https://www.instagram.com/nagaedofficial)



[linkedin.com/nagaedofficial](https://www.linkedin.com/company/nagaedofficial)

CONTENTS

About NagaEd	III
Chapter	
01 Introduction to the NEP 2020	2
Key Features of NEP 2020	
Objectives of NEP 2020	
02 Key Changes in the NEP 2020	6
03 Assessing the Current State of Your Classroom	8
Curriculum Evaluation	
Classroom Infrastructure	
Teacher Capacity and Professional Development	
Strategising for Improvement	
04 Developing a Plan for Capacity Building	10
Strategies for Capacity Building	
Building Teacher Capacity	
05 Introducing Technology in the Classroom	12
Benefits of Technology in Education	
Practical Tips for Introducing Technology in the Classroom	
Integrating Digital Class	
06 Implementing Continuous Assessment	14
Practical Tips for Implementing Continuous Assessment	
Supporting Continuous Assessment	
07 Focusing on Skill-based Education	16
Practical Tips for Implementing Skill-based Education	
The Impact of Skill-based Education	
08 Encouraging Experiential Learning	18
Practical Tips for Implementing Experiential Learning	
Supporting Experiential Learning with Digital Resources	
09 Involving Parents and the Community	20
Practical Tips for Involving Parents and the Community	
The Impact of Parent and Community Involvement	
10 Monitoring and Evaluating Progress in Your Classroom	22
Practical Tips for Monitoring and Evaluating Progress	
The Importance of Monitoring and Evaluation	



CHAPTER 1:

INTRODUCTION TO THE NEP 2020

The National Education Policy (NEP) 2020 is a visionary framework designed to transform the Indian education system, making it more inclusive, equitable, and focused on holistic development. As teachers, it is crucial to grasp the key features of this policy and to integrate them into our daily teaching practices, ensuring that our students benefit fully from these reforms

KEY FEATURES OF NEP 2020

1. Learner-centred Approach:

The NEP promotes a student-focused educational experience, encouraging creativity, critical thinking, and problem-solving. This approach is particularly vital in fostering the unique talents and potential of students in diverse regions like Meghalaya.

2. Universal Access to Quality Education:

The policy prioritises providing all learners, especially those from disadvantaged groups, with access to quality education. In Meghalaya and other North Eastern states, this includes addressing geographical, economic, and cultural barriers to education.

3. 5+3+3+4 Education Structure:

NEP introduces a new system, replacing the traditional 10+2 format. This structure is designed to match the developmental stages of children, making education more relevant and effective.

4. Technology Integration and Blended Learning:

The policy emphasises the integration of technology in education, which is critical for remote and rural areas in Meghalaya. Blended learning, combining traditional and digital methods, can help bridge gaps in resources and accessibility.

5. Skill-based and Vocational Education:

NEP underscores the importance of equipping students with practical skills through vocational training, which is essential for the economic development of the region.

6. Continuous Student Assessment:

The policy advocates for ongoing assessment to monitor student progress and enhance learning outcomes. This approach helps teachers in Meghalaya to address individual student needs more effectively.

7. Teacher Professional Development and Autonomy:

NEP promotes continuous professional growth for teachers, empowering you to innovate and take charge of your teaching methods. For teachers in Meghalaya, this means staying updated with the latest pedagogical strategies and technologies.

8. Community and Parental Involvement:

The policy encourages the active involvement of parents and communities in the educational process. In regions like Meghalaya, where community ties are strong, this can significantly enhance the learning experience.

OBJECTIVES OF NEP 2020

The NEP 2020 sets forth several objectives aimed at overhauling the Indian education system to make it more inclusive, equitable, and of higher quality. Here's how these objectives can be aligned with the educational needs of Meghalaya:

- 1. Universal Access and Equitable Education:**
Ensuring that every child in Meghalaya has access to quality education, regardless of their socio-economic background, is paramount. This includes addressing the specific challenges faced by tribal and rural communities.
- 2. Holistic Development:**
NEP promotes the development of cognitive, social, emotional, and physical skills. For students in Meghalaya, this broad-based education can help nurture their diverse cultural and creative talents.
- 3. Curriculum Reforms:**
The introduction of a flexible curriculum that fosters critical thinking and creativity is essential. Teachers in Meghalaya can adapt this curriculum to include local knowledge and traditions, making learning more relevant to students' lives.
- 4. Multilingualism and Linguistic Diversity:**
Recognising the linguistic diversity of Meghalaya, NEP encourages the learning of multiple languages. This policy supports the preservation of local languages while also promoting proficiency in state and national languages.
- 5. Teacher Training and Professional Development:**
Continuous professional development is crucial for educators to deliver high-quality education. In Meghalaya, this includes training in culturally responsive teaching methods and the use of digital tools.
- 6. Use of Technology:**
Leveraging technology to enhance teaching and learning is a key focus. In Meghalaya, where connectivity can be a challenge, innovative solutions like mobile learning and offline resources can play a critical role.
- 7. Vocational Education:**
Integrating vocational training with mainstream education is essential for preparing students for the workforce. In Meghalaya, this can include training in local crafts, agriculture, and other region-specific skills.
- 8. Research and Innovation:**
Promoting research and innovation in education helps create a dynamic learning environment. For educators in Meghalaya, this means exploring new teaching methods and learning models that resonate with the local context.

By understanding and embracing these objectives, school administrators and teachers in Meghalaya can contribute to building a more inclusive, equitable, and high-quality education system that meets the needs of all students in the region.



CHAPTER 2:

KEY CHANGES IN THE NEP 2020

The National Education Policy 2020 (NEP 2020) is a transformative initiative designed to reshape the Indian education system. It brings forth several key changes that hold significant implications for schools in Meghalaya. Here are some of the major changes:

1. New Curricular and Pedagogical Framework

The NEP 2020 introduces a flexible and multidisciplinary curricular framework aimed at fostering critical thinking, creativity, and holistic learning. This new approach encourages integrating local knowledge and context, making education more relevant for students in Meghalaya.

2. Emphasis on Skill-based Education

The policy highlights the importance of developing 21st-century skills such as communication, collaboration, problem-solving, and digital literacy. For schools in Meghalaya, this means incorporating practical, skill-based learning that equips students for success in both local and global contexts.

3. Integration of Technology in Education

Recognising the transformative potential of technology, NEP 2020 stresses the need to incorporate digital tools into teaching and learning. This includes using digital resources such as NagaEd Digital Class, conducting online assessments, and creating virtual classrooms, which are particularly beneficial for schools in remote areas of Meghalaya.

4. Promotion of Multilingualism

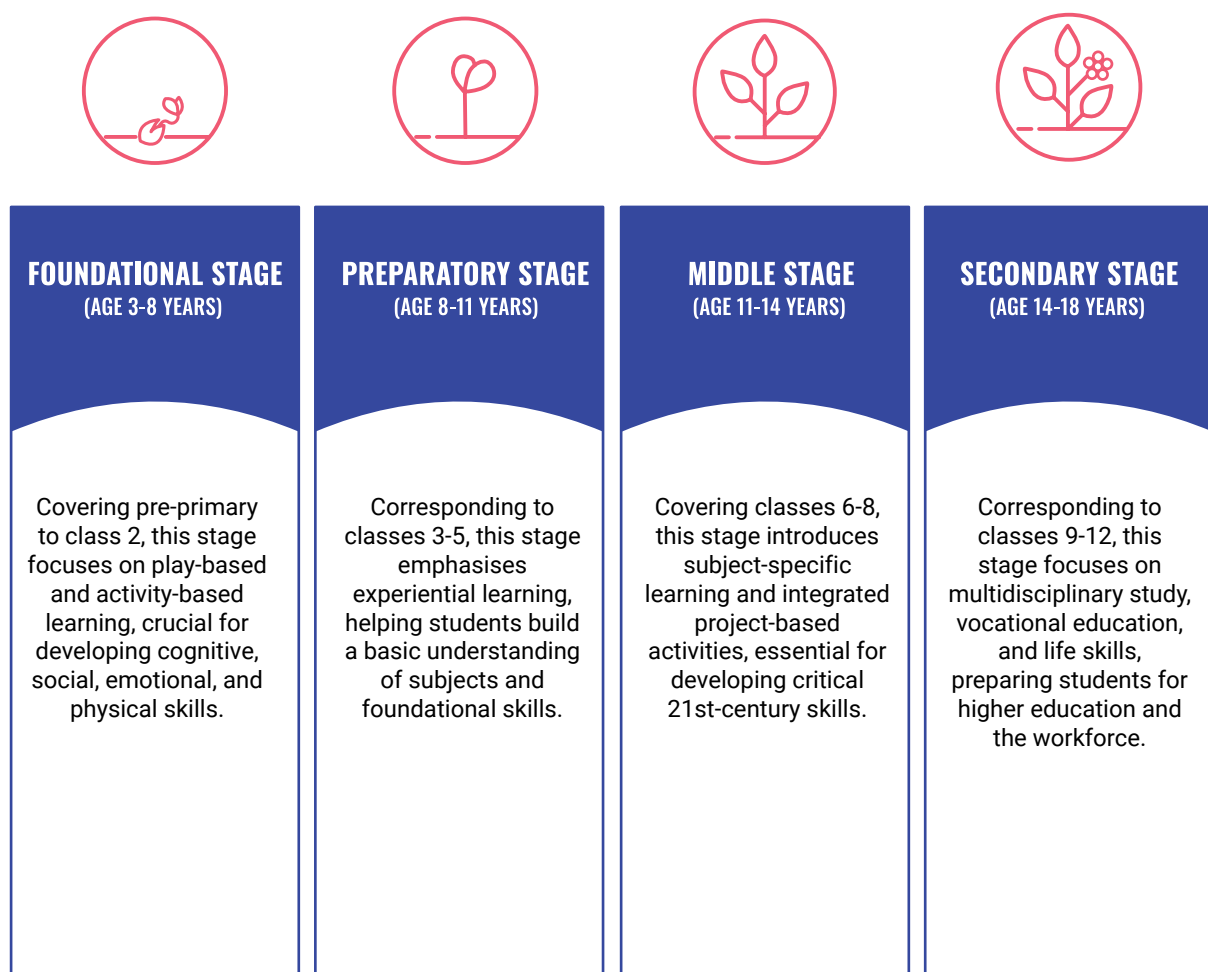
NEP 2020 underscores the value of multilingualism, encouraging instruction in students' mother tongue or local language at least until grade 5. This is crucial for preserving the rich linguistic diversity of Meghalaya and ensuring that students build strong foundational skills in a language they understand.

5. Continuous assessment:

Moving away from traditional high-stakes exams, NEP 2020 advocates for continuous, formative assessments. This approach allows teachers in Meghalaya to regularly monitor student progress, providing timely feedback and support to enhance learning outcomes.

6. New School Education Structure

The policy proposes a new 5+3+3+4 structure for school education, aligning educational stages with students' developmental needs:



The changes outlined in NEP 2020 are significant and require thoughtful implementation. Schools in Meghalaya must realign their curriculum, pedagogy, and assessment methods with this new framework. Additionally, it is essential to invest in building the capacity of teachers to deliver quality education that nurtures the development of 21st-century skills in students.

CHAPTER 3:

ASSESSING THE CURRENT STATE OF YOUR CLASSROOM

To effectively implement the National Education Policy 2020 (NEP 2020), it is essential for teachers to first evaluate the current state of their classrooms. This assessment will help identify areas of strength and areas that require improvement, ensuring that your classroom is fully prepared to align with the new policy's objectives.

Curriculum Evaluation

Begin by reviewing the curriculum you currently use in your classroom. Compare it with the new curricular and pedagogical framework outlined in NEP 2020. This process will help you pinpoint gaps and opportunities for enhancing your lessons. Aligning your curriculum with NEP 2020 principles, such as promoting critical thinking, creativity, and holistic learning, is crucial. NagaEd offers classroom content that supports these principles, providing you with the tools needed to deliver a relevant and enriched learning experience.

Classroom Infrastructure

The physical and digital infrastructure of your classroom plays a vital role in supporting the educational goals set out by NEP 2020. Evaluate the adequacy and quality of the resources available to you, such as seating arrangements, teaching aids, digital tools, and access to resources like libraries or computer labs. Identifying and addressing any shortcomings in infrastructure is important to create a conducive learning environment that supports the holistic and technology-driven approach of NEP 2020, and this can be done in the classrooms of Meghalaya too.

Teacher Capacity and Professional Development

Your ability to implement the NEP 2020 in your classroom depends heavily on your skills and knowledge. Reflect on your current teaching practices and consider areas where you might need further training or support. This might include familiarising yourself with new teaching methodologies, integrating digital learning resources, and using continuous assessment tools effectively. NagaEd provides continuous professional development resources that can help you enhance your teaching capacity and align with the NEP 2020's goals.

Strategising for Improvement

Once you've assessed your classroom's current state, use the insights gained to develop a strategic improvement plan. Focus on enhancing curriculum alignment, upgrading infrastructure, and building your teaching capacity. By addressing these key areas, you can ensure that your classroom is well-prepared to deliver high-quality education in line with the NEP 2020, ultimately benefiting your students and contributing to their holistic development.

CHAPTER 4:

DEVELOPING A PLAN FOR CAPACITY BUILDING

Developing a robust plan for capacity building is essential for effectively implementing the National Education Policy 2020 (NEP 2020) in your classroom. Capacity building involves enhancing your knowledge, skills, and abilities to ensure that you can successfully adopt and apply the new educational approaches outlined in the policy.

Strategies for Capacity Building

- 1. Teacher Training:**
Engage in training programmes that focus on the new curricular and pedagogical framework of NEP 2020. This training will help you understand the policy's approach to education and equip you with the tools to integrate these methods into your teaching practice.
- 2. Professional Development:**
Participate in ongoing professional development opportunities such as workshops, seminars, and conferences. These programmes will keep you informed about the latest developments in education and help you continuously develop new skills that are crucial for effective teaching.
- 3. Collaboration with Other Teachers:**
Work with colleagues and teachers from other schools to share best practices and resources. Collaborating with peers allows you to learn from each other's experiences and build a supportive community of practice that enhances your teaching strategies.
- 4. In-Service Training:**
Take advantage of in-service training opportunities offered to teachers. These sessions are designed to help you and your fellow teachers support the implementation of NEP 2020, ensuring that everyone is well-prepared to meet the policy's objectives.



BUILDING TEACHER CAPACITY

We understand the importance of capacity building in implementing NEP 2020. Our digital education specialists provide training courses and workshops designed by experts from Australia and the Northeast. These programmes are tailored to help you customise and develop lesson plans, learning frameworks, and pathways that align with NEP objectives, ensuring that your teaching is both effective and innovative.

CHAPTER 5:

INTRODUCING TECHNOLOGY IN THE CLASSROOM

Introducing technology into your classroom can significantly enhance students' learning outcomes and engagement. However, it's essential to do this in a way that aligns with the NEP 2020's goals of fostering critical thinking and problem-solving skills.

Benefits of Technology in Education

- 1. Improving Student Engagement:**
Technology can make learning more interactive and engaging, helping to capture students' interest and keep them motivated.
- 2. Enabling Personalised Learning:**
With technology, you can tailor your instruction to meet the unique needs and interests of each student, allowing them to learn at their own pace.
- 3. Facilitating Collaboration:**
Technology enables collaboration, allowing students to work together and with you, even if they are not in the same physical location.
- 4. Enhancing Teacher Effectiveness:**
Technology can streamline your lesson planning, assessments, and feedback processes, making your teaching more efficient and impactful.

Practical Tips for Introducing Technology in the Classroom

- 1. Conduct a Technology Audit:**
Start by assessing the technology currently available in your school. Identify any gaps in hardware, software, and connectivity to plan effectively for the integration of technology in your classroom.
- 2. Select Appropriate Digital Learning Resources:**
Choose digital resources such as our Digital Class courses that align with the NEP 2020 and your school's curriculum. Ensure these resources are interactive, engaging, and designed to promote critical thinking and problem-solving.
- 3. Use Online Assessment Tools:**
Online tools can help you track student progress and identify areas where additional support is needed. These tools provide immediate feedback, which can be crucial in improving student learning outcomes. Our Learning Management System (LMS) includes a tracking dashboard that gives you valuable insights into each student's performance.

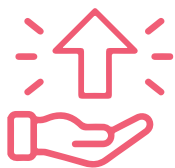


4. Train Teachers:

It's important to equip yourself and your colleagues with the skills needed to effectively use technology in the classroom. This includes training on digital resources, online assessments, and integrating technology into lesson plans. We offer multiple courses designed to help teachers upskill and become proficient digital educators.

5. Ensure Equitable Access to Technology:

Make sure that all students have access to the technology they need, regardless of socio-economic background. This helps to ensure that every student has an equal opportunity to benefit from digital learning.



INTEGRATING DIGITAL CLASS

We can support integrating our Digital Class into your classroom. This includes access to online resources, courseware, and interactive content, along with training on how to effectively use these digital tools in the classroom.

CHAPTER 6:

IMPLEMENTING CONTINUOUS ASSESSMENT

Continuous assessment is a cornerstone of the National Education Policy 2020 (NEP 2020), ensuring that students are consistently learning and progressing towards their educational goals. This approach involves the ongoing evaluation of students' progress using various tools and methods, including tests, quizzes, projects, and assignments.

Practical Tips for Implementing Continuous Assessment

1. Use Formative Assessments:

Formative assessments are conducted during the learning process to gauge students' understanding and progress. These can include quizzes, assignments, and projects. Formative assessments are crucial as they help you identify areas where students may be struggling, allowing you to adjust your teaching methods accordingly. Our Digital Class courses come equipped with a variety of formative assessments for each chapter, making it easier to integrate these into your teaching.

2. Use Summative Assessments:

Summative assessments evaluate students' learning at the end of a unit or course, typically through tests and exams. These assessments provide a clear measure of what students have learned, helping you identify areas where your teaching might need refinement. Incorporating both formative and summative assessments ensures a balanced approach to evaluating student progress.

3. Use Rubrics:

Rubrics are detailed scoring guides that outline the criteria for assignments or projects. They help students understand what is expected of them and assist you in evaluating their work consistently and fairly. Developing clear rubrics for each assignment can enhance transparency and fairness in grading. Our Digital Education Specialists can assist in creating customised rubrics for each grade level at your school.

4. Provide Regular Feedback:

Feedback is a vital component of continuous assessment. Regular feedback on students' work, highlighting both strengths and areas for improvement, is essential for motivating students and guiding their learning. Effective feedback also helps you refine your teaching strategies to better meet the needs of your students. Our platform includes built-in feedback features that allow you to provide direct and timely feedback to students on their assignments.

5. Leverage Technology:

Technology can greatly facilitate the implementation of continuous assessment. Online tools like Google Forms, Kahoot!, or our Learning Management System can simplify the process of administering and grading assessments, making it more efficient. These tools can also provide instant feedback to students, which is crucial for their learning and development.



SUPPORTING CONTINUOUS ASSESSMENT

We can help you establish a robust system of continuous assessment, utilising our range of digital tools to monitor and evaluate student progress. By moving away from the traditional reliance on high-stakes exams and towards regular, formative assessment, you can better align with the key recommendations of NEP 2020 and improve overall student learning outcomes.

CHAPTER 7:

FOCUSING ON SKILL-BASED EDUCATION

The National Education Policy 2020 (NEP 2020) encourages a shift towards a skill-based education system that prioritises practical, job-oriented learning. This approach goes beyond theoretical knowledge, aiming to equip students with essential skills and competencies that will prepare them for future careers and personal growth. For teachers in Meghalaya, adopting this approach is key to helping students meet the challenges of the future.

Practical Tips for Implementing Skill-based Education

1. Identify Key Skills:

Begin by identifying the essential skills that will be most beneficial for your students' future careers and personal development. These might include critical thinking, problem-solving, communication, collaboration, and creativity. Recognising these key skills will help you focus your teaching on what matters most for your students' success.

2. Integrate Skill-based Learning into the Curriculum:

Incorporate real-world problems, case studies, and simulations into your lessons. This integration allows students to apply their knowledge in practical situations, helping them develop relevant skills while making learning more engaging and meaningful.

3. Encourage Project-based Learning:

Facilitate project-based learning opportunities where students can work on real-world projects that require them to apply their skills and knowledge. These projects should challenge students to think critically, collaborate with peers, and develop innovative solutions, fostering a deeper understanding of the subject matter.

4. Leverage Technology:

Utilise technology, like our Digital Class, to enhance skill-based learning in your classroom. Our digital tools such as online simulations, virtual labs, and collaboration platforms offer students hands-on learning experiences that are both interactive and educational. Technology is especially useful in bridging resource gaps in remote areas, providing equal learning opportunities for all students.

5. Provide Opportunities for Experiential Learning:

Create opportunities for experiential learning by encouraging internships, apprenticeships, and volunteering. These experiences allow students to apply their skills in real-world settings, helping them gain practical knowledge and a clearer understanding of potential career paths.



THE IMPACT OF SKILL-BASED EDUCATION

By focusing on skill-based education, you are preparing your students in Meghalaya to face the future with confidence. This approach not only equips them with the skills necessary for their careers but also fosters a lifelong learning mindset, enabling them to adapt to an ever-changing world and continue growing both personally and professionally.

CHAPTER 8:

ENCOURAGING EXPERIENTIAL LEARNING



Experiential learning emphasises the importance of learning by doing, allowing students to engage in practical, hands-on experiences that help them apply their knowledge to real-world situations. This approach not only deepens students' understanding of concepts but also builds essential skills that will be valuable in their future careers. The NEP 2020 highlights the significance of experiential learning and encourages its integration into classroom practices.

Practical Tips for Implementing Experiential Learning

- 1. Plan Field Trips:**
Organise field trips to museums, cultural sites, zoos, or other relevant locations. These experiences allow students to connect classroom knowledge with real-world applications, making learning more tangible and memorable.
- 2. Facilitate Project-based Learning:**
Design projects that challenge students to solve real-world problems. This method fosters critical thinking, problem-solving, and collaboration, enabling students to apply their academic knowledge in practical settings.
- 3. Utilise Case Studies:**
Incorporate case studies into your lessons to teach students about real-world situations. By analysing and discussing these cases, students learn how to apply theoretical concepts to solve actual problems.
- 4. Encourage Internships and Job Shadowing:**
Motivate your students to participate in internships or job shadowing programmes. These opportunities provide valuable hands-on experience in fields they are interested in, helping them gain insights into potential career paths.
- 5. Use Simulations:**
Implement simulations in your teaching, especially in subjects like business management, engineering, or science. Simulations offer a controlled environment where students can experiment, make decisions, and see the consequences of their actions, enhancing their practical understanding of complex concepts.



SUPPORTING EXPERIENTIAL LEARNING WITH DIGITAL RESOURCES

Incorporating experiential learning into your teaching not only enriches your students' learning experiences but also equips them with skills that are crucial for success in their future careers. To support this, we offer a range of digital resources, including online simulations and virtual labs for science and mathematics. These tools allow students to explore complex ideas in a safe, interactive environment, making experiential learning accessible and effective.



CHAPTER 9: INVOLVING PARENTS AND THE COMMUNITY



Parents and the community play a crucial role in supporting the education of students. By actively involving them in school activities, schools in Meghalaya can ensure a more comprehensive and effective implementation of the National Education Policy 2020 (NEP 2020)

Practical Tips for Involving Parents and the Community

1. **Conduct Regular Parent-Teacher Meetings:**

Organise regular parent-teacher meetings to discuss students' progress, address concerns, and gather feedback from parents. These meetings are essential for building a strong relationship between parents and teachers, fostering a supportive learning environment for students.

2. **Engage Parents in School Activities:**

Involve parents in various school events such as sports days, annual day celebrations, and cultural programmes. Their participation not only helps them feel more connected to the school but also encourages them to take an active role in their children's education.

3. **Establish a Parent-Teacher Association (PTA):**

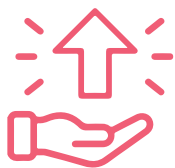
Set up a Parent-Teacher Association (PTA) to create a platform for open communication and collaboration between parents and teachers. The PTA can play a vital role in discussing issues, planning school projects, and enhancing the overall educational experience for students.

4. **Conduct Community Outreach Programmes:**

Organise community outreach programmes to raise awareness about the importance of education and encourage community participation in school activities. These programmes can help build a sense of shared responsibility for the educational success of students.

5. **Seek Community Support:**

Engage local businesses, NGOs, and other organisations to support school activities. These partnerships can provide valuable resources, share expertise, and enhance the educational experience for students.



THE IMPACT OF PARENT AND COMMUNITY INVOLVEMENT

By involving parents and the community, schools in Meghalaya can create a more collaborative and supportive environment that promotes the holistic development of students. This collaborative approach is key to ensuring the successful implementation of NEP 2020 and achieving positive educational outcomes for all students.

CHAPTER 10:

MONITORING AND EVALUATING PROGRESS IN YOUR CLASSROOM



Monitoring and evaluating your progress in implementing the National Education Policy 2020 (NEP 2020) is essential to ensure that your teaching practices are aligned with the policy's goals. Regular assessments help you make necessary adjustments, ensuring that your students receive the best possible education.

Practical Tips for Monitoring and Evaluating Progress

1. Set Clear Goals and Objectives:

Define clear, specific goals and objectives for your classroom that align with NEP 2020. Make sure these goals are SMART—Specific, Measurable, Achievable, Relevant, and Time-bound. This will help you focus your efforts and track progress effectively.

2. Collect and Analyse Data:

Regularly gather data on key aspects of your teaching, such as student performance, curriculum delivery, and classroom engagement. Analyse this data to identify strengths, weaknesses, and trends. This will help you understand what is working well and where adjustments may be needed.

3. Use Feedback Mechanisms:

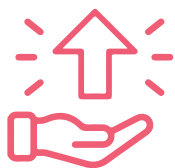
Implement feedback mechanisms to gather insights from your students. Encourage them to share their thoughts on lessons, assignments, and overall learning experiences. This feedback is crucial for identifying areas that may need improvement and for making informed adjustments to your teaching strategies.

4. Engage in Self-reflection:

Regularly reflect on your teaching practices to assess how well you are meeting your classroom goals. This involves an honest evaluation of what is going well and what could be improved. Self-reflection fosters a commitment to continuous improvement and helps you stay aligned with NEP 2020 objectives.

5. Seek Peer Evaluation:

Consider inviting colleagues to observe your classroom and provide feedback. Peer evaluations offer valuable perspectives and can help you identify areas for improvement that you might not have noticed on your own.



THE IMPORTANCE OF MONITORING AND EVALUATION

By consistently monitoring and evaluating your classroom practices, you can ensure that your teaching is effective and aligned with NEP 2020. We provide a range of resources to support your monitoring and evaluation efforts. These include data collection and analysis tools, as well as professional development courses tailored to help you refine your teaching practices. Partnering with us can help you make evidence-based decisions and stay on track to achieve your NEP 2020 goals, ensuring that your students are well-prepared for the future.



NAGAED: YOUR PARTNER IN IMPLEMENTING THE NATIONAL EDUCATION POLICY

The National Education Policy 2020 offers a significant opportunity for teachers in Meghalaya to transform their approach to education, equipping students with the skills they need for the 21st century. NEP 2020 emphasises holistic, multidisciplinary education that fosters critical thinking, creativity, and problem-solving skills while promoting the use of technology and experiential learning.

As a teacher, successfully implementing NEP 2020 in your classroom involves several key steps: assessing your current teaching practices, building your capacity through professional development, aligning your curriculum with NEP goals, integrating technology, implementing continuous assessment, focusing on skill-based education, and encouraging experiential learning. It's also crucial to collaborate with colleagues, involve parents and the community, and continuously monitor and evaluate your progress.

By embracing these strategies, you can create a more inclusive, equitable, and high-quality education system that empowers your students to become lifelong learners and responsible citizens. Achieving the vision of NEP 2020 requires the collective efforts of teachers, school leaders, parents, and the community, all working together to ensure that every student receives a world-class education.

We are here to support you in this important journey. As a leader in digital education solutions, we offer comprehensive tools and resources to help you align your teaching with NEP 2020. Our expert team provides capacity-building programmes, curriculum alignment support, digital integration solutions, and assessment tools designed specifically for schools in Meghalaya.

By partnering with us, you'll gain access to cutting-edge digital tools, tailored teacher training programmes, and best practices from around the world. Our solutions are designed to meet the specific needs of your classroom and are built to be scalable and sustainable.

Take the first step toward implementing NEP 2020 in your classroom today. Contact us to schedule a consultation with one of our education experts and discover how our solutions can help you transform education in Meghalaya. Together, we can prepare our students for success in the 21st century.





NagaEd
LK Vizo Complex
Tekuuliesha, Secretariat Road,
Kohima, Nagaland

www.nagaed.com
+91 8787748698
hello@nagaed.com



@NagaEdofficial